



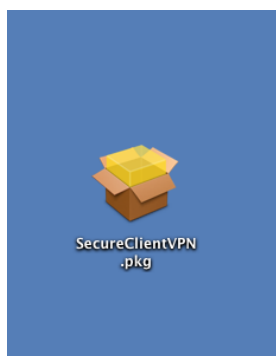
## Manual instalação cliente VPN Cloud

O cliente pode ser obtido através do seguinte url:

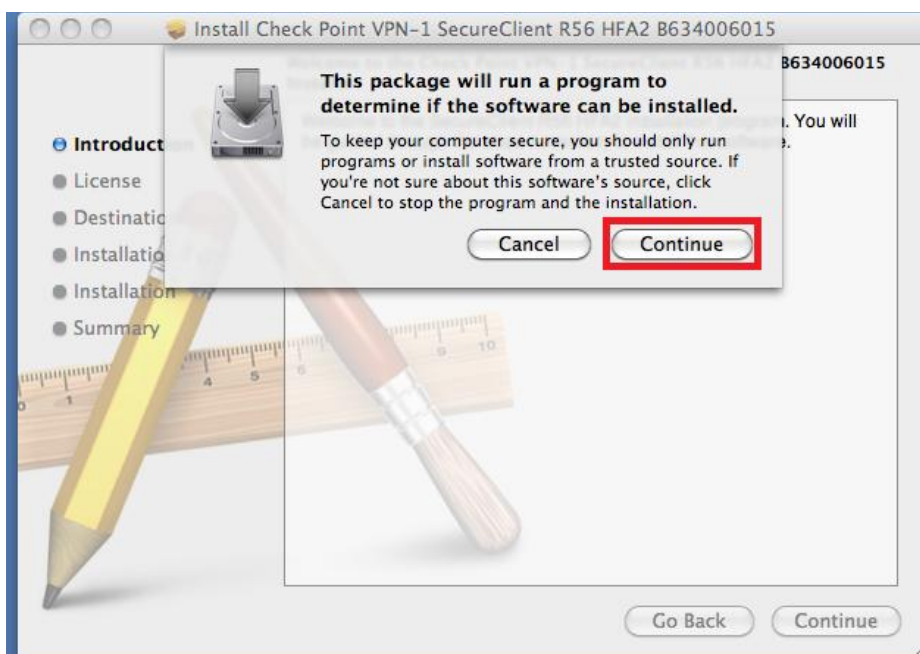
<http://www.netrail.pt/SecureClientVPN.pkg.zip>

Após o download com sucesso é seguir os seguintes passos para instalar:

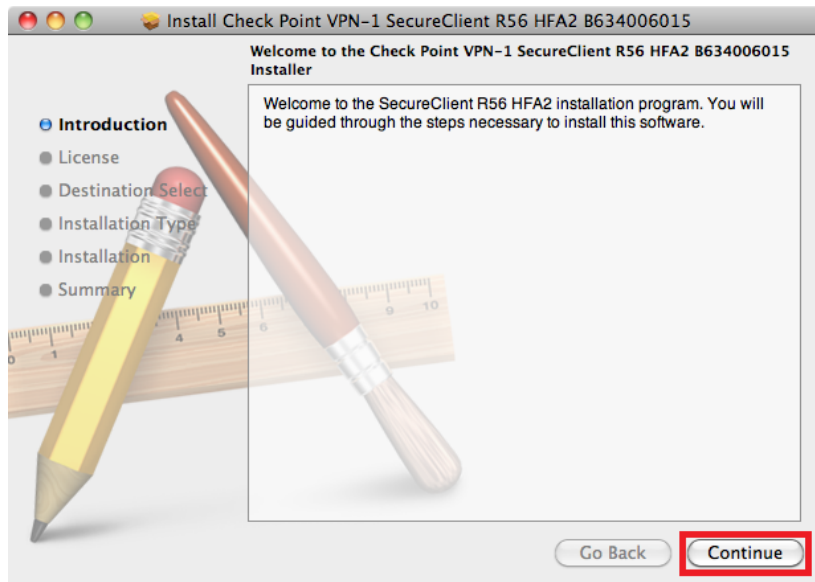
1. Duplo click na aplicação



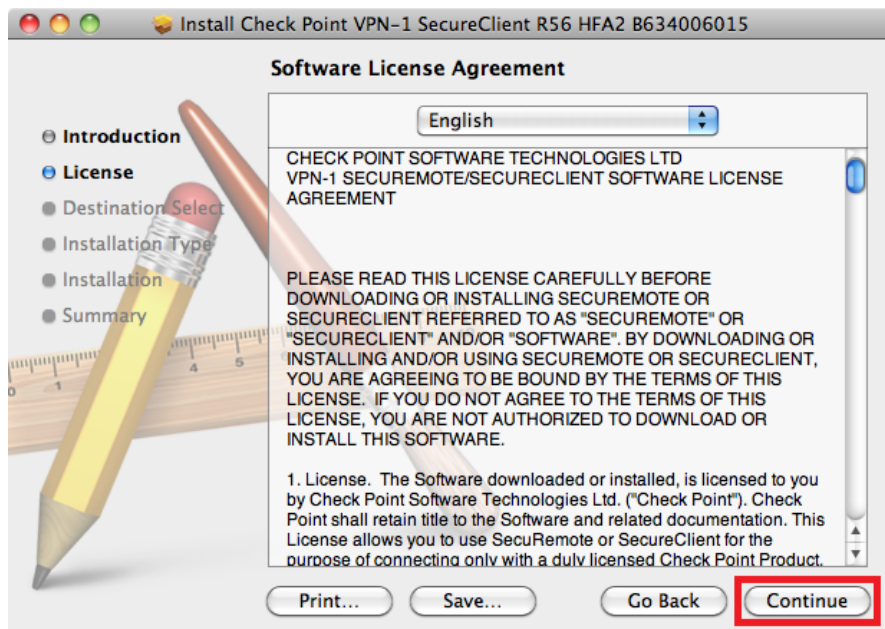
2. Continue



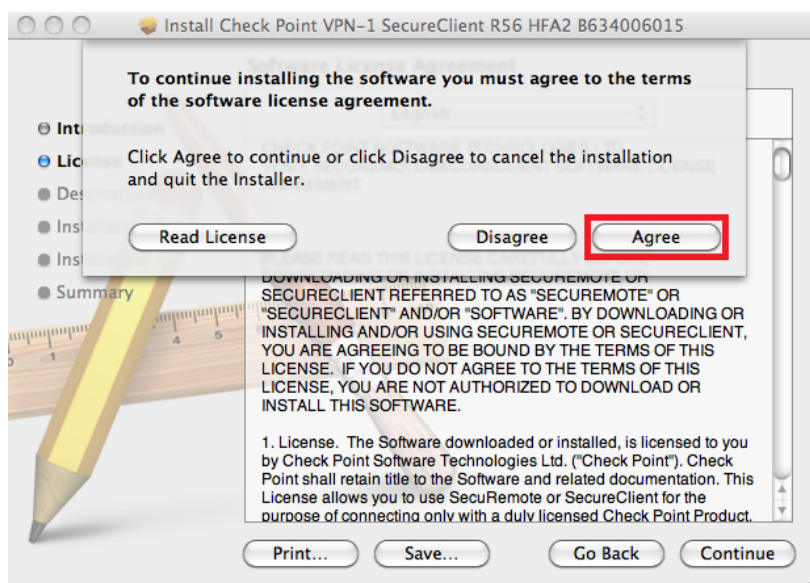
### 3. Continue



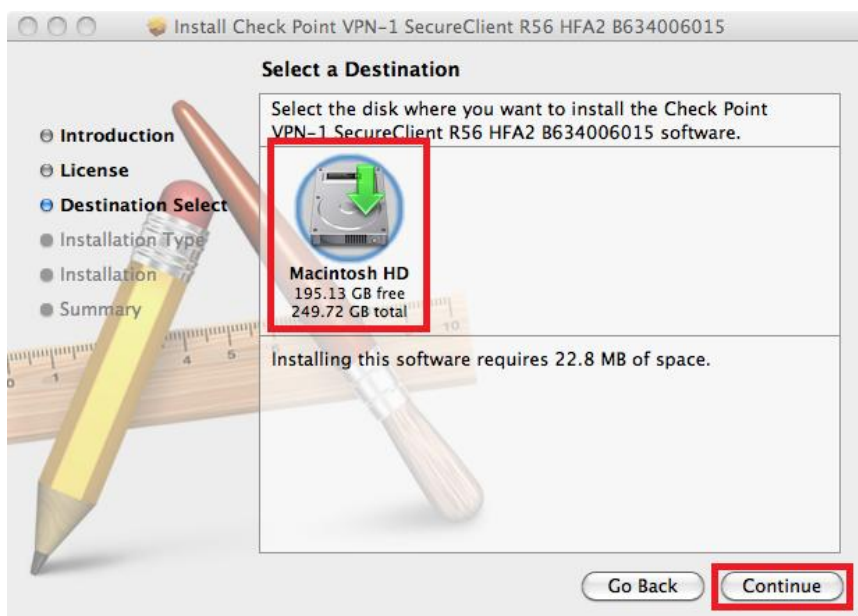
### 4. Continue



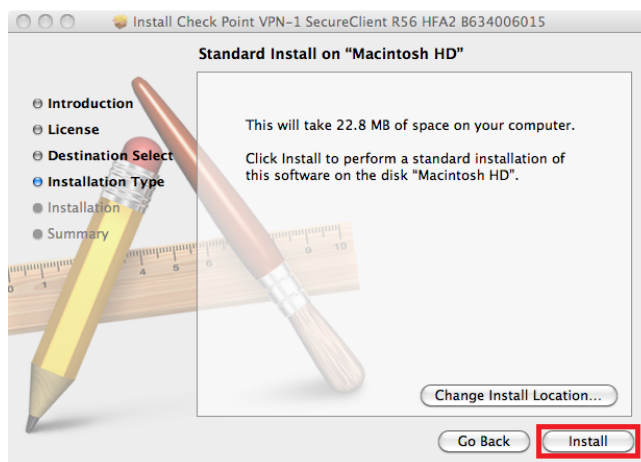
## 5. Agree



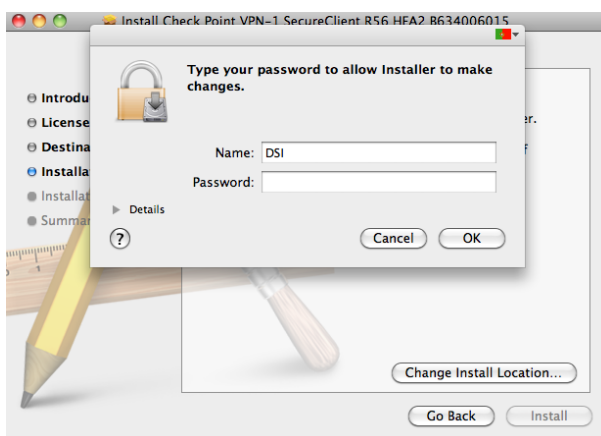
## 6. Selecionar o disco, Continue



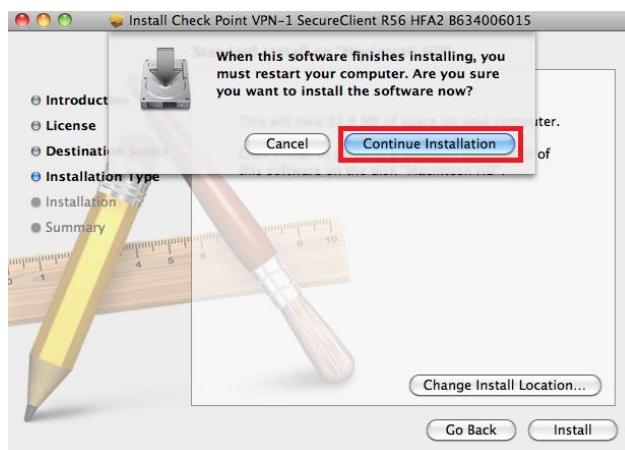
## 7. Continue



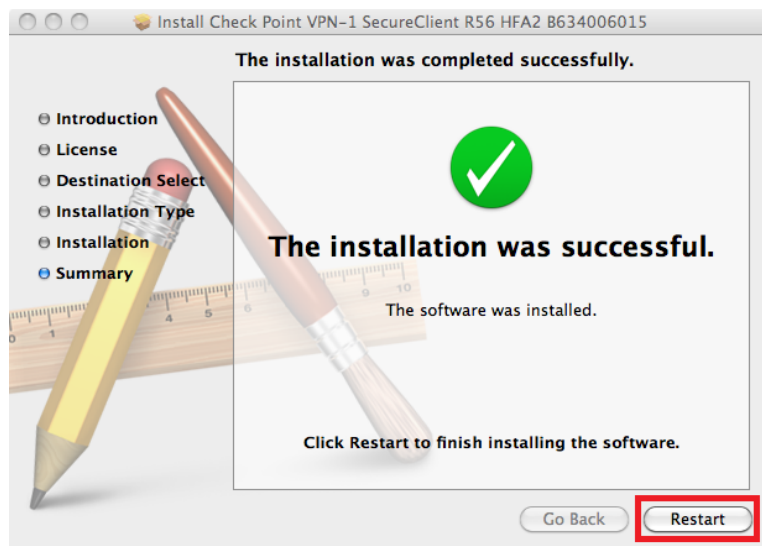
## 8. Colocar as credenciais que permitam instalar, Install



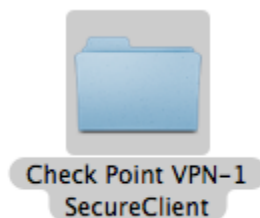
## 9. Continue Installation



## 10. Restart



11. Após a instalação com sucesso, é possível encontrar o seguinte directório dentro dos Aplicativos



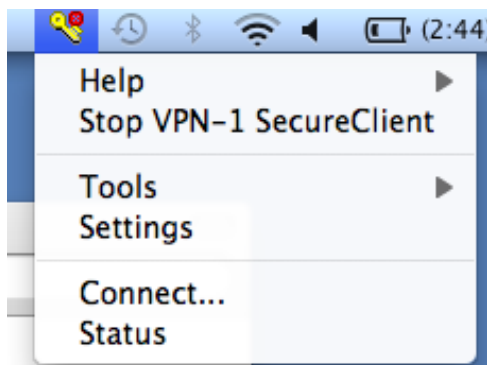
12. Fazer duplo click no atalho SecureClient



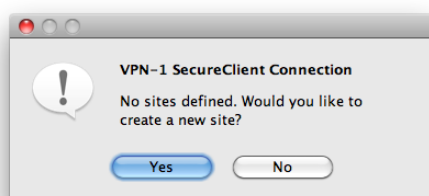
13. Vai encontrar o icon do SecureClient na barra no topo do écran.



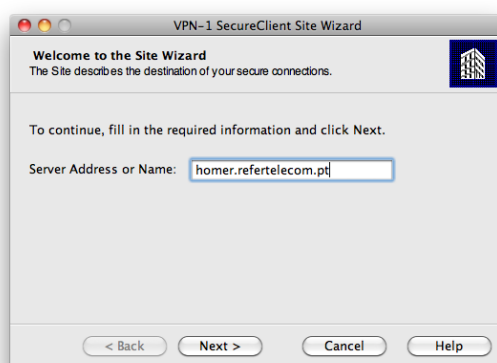
14. Clicar no icon, Connect...



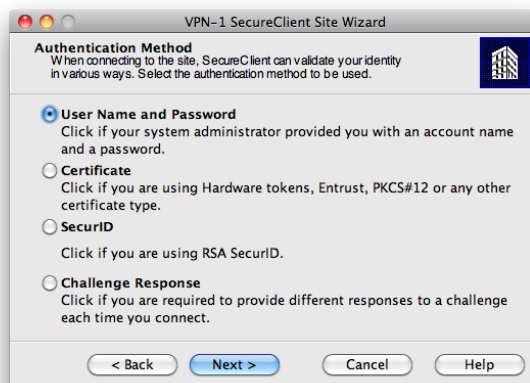
15. Create a new Site? Yes



16. Server Address or Name: homer.refertelecom.pt



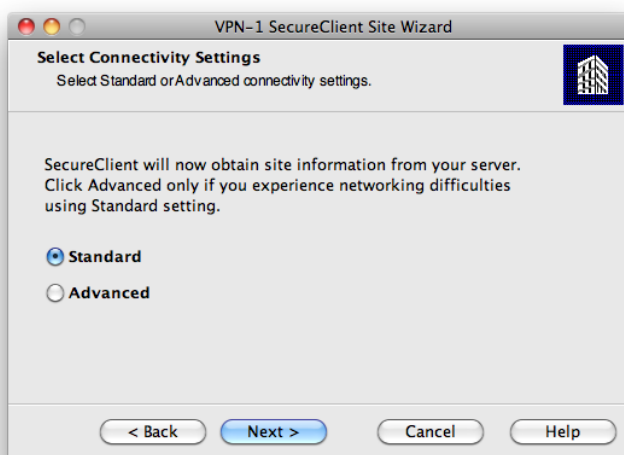
## 17. User Name and Password



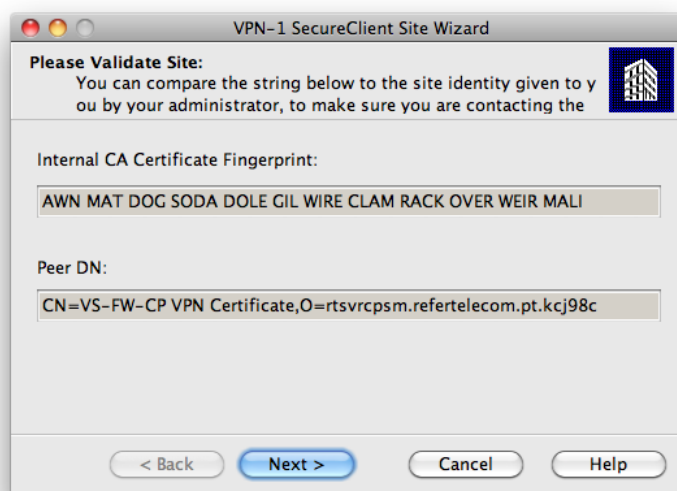
## 18. Preencher os campos com as credenciais fornecidas



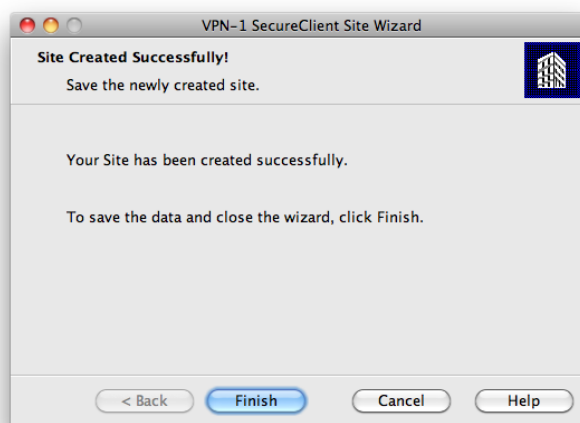
## 19. Escolher a opção standard



## 20. Next



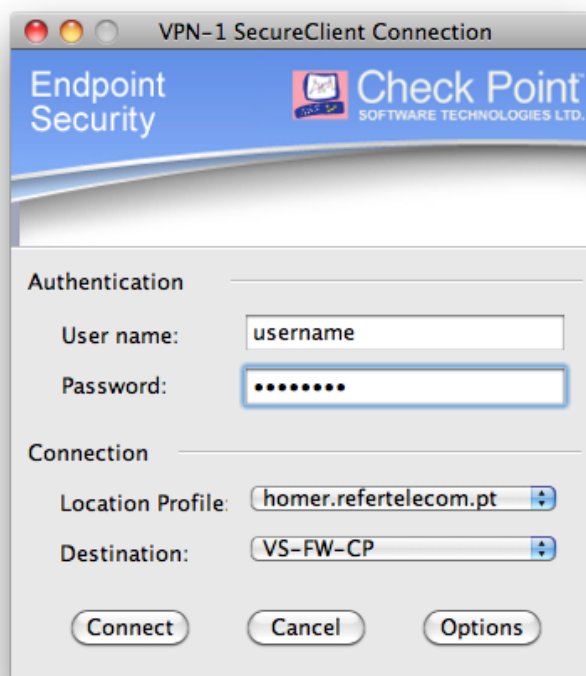
## 21. Finish



## 22. Would you like to connect now? Yes



23. Preencher os campos username e password, connect



24. Se tudo correr como esperado deverá surgir a mensagem a dizer Connection succeeded

